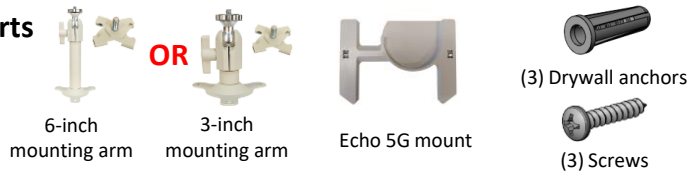


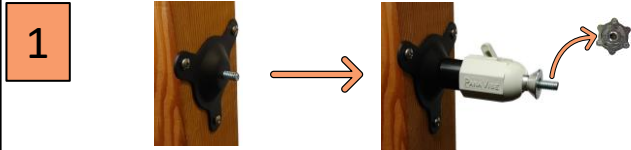
Echo 5G Mounting Bracket

Parts



How to wall-mount the bracket

Make sure there is an outlet within 10-feet of where you want to mount the Echo 5G.



Use bracket to mark and drill 7/64-inch pilot holes before the bracket into place, then screw arm into bracket until tight and remove hex nut.



Screw the Echo 5G mount into the bracket and line up the rail inserts with the rails on the back of the Echo. Slide the Echo down into place.



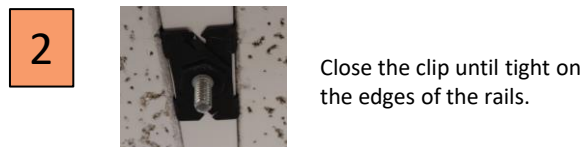
Remove the Velcro ring from the back of the indoor unit and slide it into the round slot on the back of the mount so the tabs on the mount click into the slots on the indoor unit. Plug the indoor unit in when finished.

How to ceiling-mount the bracket

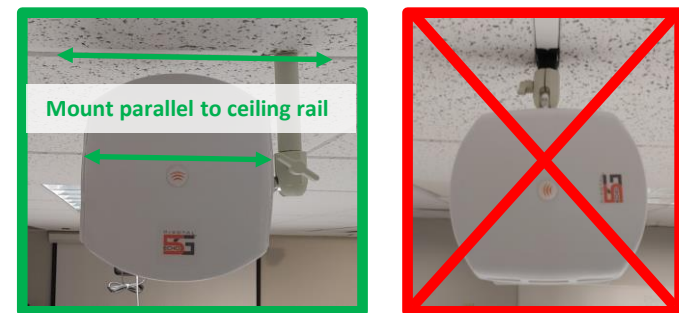
DO NOT use the 3-inch arm to ceiling-mount the Echo 5G. **ONLY** the 6-inch arm should be used for ceiling mounts.



Open the T-bar clip and slide it over the rails between ceiling tiles.



3 Screw the Echo 5G mount into the bracket and line up the rail inserts with the rails on the back of the Echo as in Step 2 on the front, then insert the Indoor Unit as in Step 3 on the front.



DO NOT use the 3-inch arm.

DO NOT mount the Echo perpendicular to the ceiling rail.

DO NOT mount the Echo sideways. Use the ball joint to rotate the Echo so it is upright.