



INTELLIGENT BEAM MANAGEMENT SYSTEM



Experience Network  
Management with IBMS  
by Pivotal Commware



# EXPERIENCE NETWORK MANAGEMENT WITH IBMS BY PIVOTAL COMMWARE

Amidst the rapid advancement of 5G technology, mmWave frequencies have emerged as the driving force behind unprecedented data speeds and connectivity. To unlock the full potential of mmWave Pivot 5G repeaters, efficient management and monitoring are paramount. Pivotal Commware proudly introduces the IBMS (Intelligent Beam Management System), a transformative solution redefining the management of mmWave 5G repeaters. Seamlessly integrating advanced features with Cloud-based scalability, IBMS transcends the conventional Element Management System (EMS) by empowering operators and service providers to optimize, monitor, and maintain Pivot deployments with unmatched precision and efficiency.

## CUSTOMIZED ALARMS AND IN-DEPTH PERFORMANCE INSIGHTS

Empower your decision-making with IBMS's customizable alarms and performance metrics, which allow for real-time insights into device health and operational status. Detect device alarms and receive alerts based on tailored conditions you define. With over 120 performance metrics unique to Pivotal Commware devices, you gain unparalleled visibility into your network's health and performance. Receive instant notifications for critical events, performance degradation, or unauthorized access, ensuring swift corrective actions and enhancing network security.

## ENHANCED ANTENNA REDIRECTION FOR OPTIMAL PERFORMANCE

IBMS brings adaptability to the forefront with its antenna redirection feature, harnessing the power of Holographic Beam Forming® for precise connectivity optimization. By allowing you to fine-tune beams, this technology ensures a seamless, high-quality experience that evolves in harmony with your users' needs, revolutionizing the mmWave 5G connectivity landscape.

PARAMETER	MIN/MAX	CURRENT VALUE	LAST UPDATED ON (PST)	NEW VALUE
Azimuth - Electrical	-76/+76	12	Aug 23rd 2023, 12:59:20 pm	
Elevation - Electrical	-35/+35	35	Aug 23rd 2023, 12:59:20 pm	
Downlink gain - Horizontal	+11/+49.2	46	Aug 28th 2023, 04:44:28 pm	
Downlink gain - Vertical	+17.7/+48.7	48.7	Aug 28th 2023, 04:44:28 pm	
Uplink gain - Horizontal	+13.2/+49.2	30	Aug 28th 2023, 04:44:28 pm	
Uplink gain - Vertical	+13.3/+51	31.8	Aug 28th 2023, 04:44:28 pm	

FIG 1

# AUTOMATED ANTENNA ALIGNMENT FOR SUPERIOR PERFORMANCE

Seamlessly optimizing network performance, our advanced features — automatic antenna alignment and a directional signal heatmap — have redefined the complexities of aligning narrow beam antennas. With our automatic antenna alignment technology, your network achieves optimal signal strength, minimizing downtime and enhancing overall performance. This is complemented by our directional signal heatmap, offering intuitive visual insights that simplify alignment processes, while manual beam selection remains an option. Experience network management with unparalleled precision, ensuring uninterrupted connectivity and exceptional user experience.

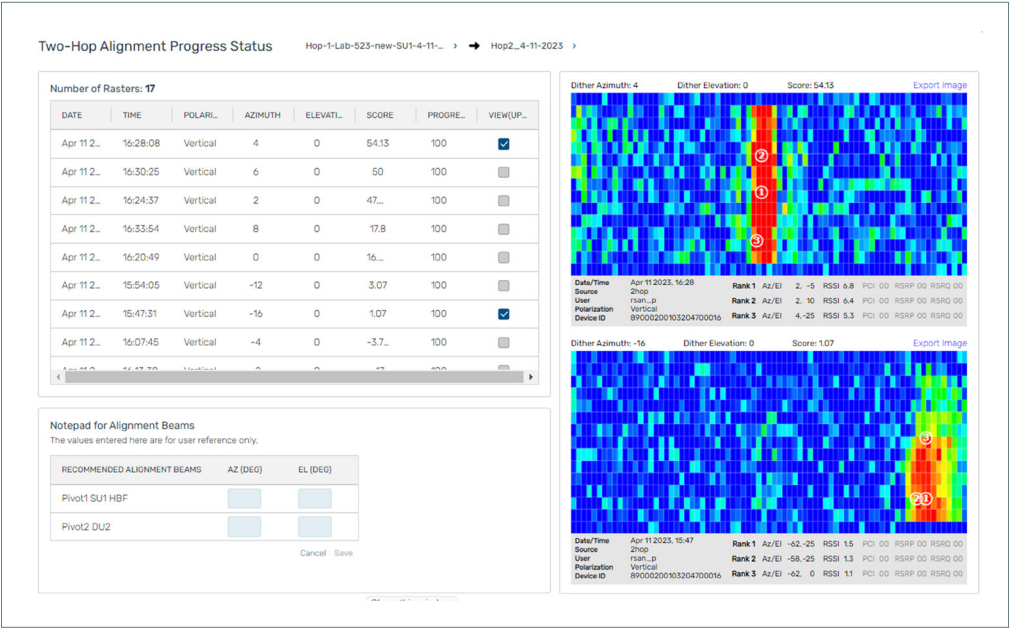


FIG 2

# PREDICTIVE MODELING LINKED TO REAL-WORLD INSIGHTS

Experience the power of data-driven network management by linking IBMS with predictive Wavescape design and your site construction database. This dynamic duo utilizes predictive insights to optimize network performance and provide expected coverage estimations. Pair this with a comprehensive site construction database, complete with viewshed photos, and gain a holistic view of your network's infrastructure. Elevate your team's capabilities with precision, ensuring smooth operations and staying ahead in the dynamic landscape of connectivity.

## CENTRALIZED CONTROL FOR EFFORTLESS MANAGEMENT

IBMS acts as the centralized hub for your Pivotal Commware devices, providing a comprehensive overview of your entire Pivot 5G deployment. With an intuitive interface, operators gain effortless control over network performance, device health, and operational status. Configure, deploy, and troubleshoot Pivots with minimal effort, streamlining tasks and enhancing operational efficiency. IBMS also offers enterprise-level Fault, Configuration, Accounting, Performance, and Security (FCAPS) support, empowering you with comprehensive oversight over your network, ensuring maintenance, optimization, and security with utmost precision and confidence.

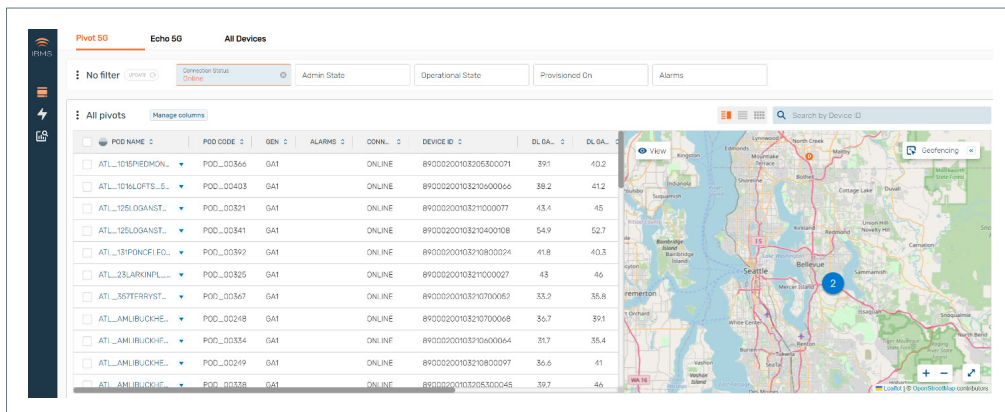


FIG 3

## REMOTE CONFIGURATION AND UPDATES FOR EFFICIENCY

Eliminate the need for on-site visits with IBMS's remote configuration and firmware update capabilities. This reduces downtime and associated costs, allowing you to seamlessly adapt to evolving network requirements and implement feature enhancements across your mmWave Pivot 5G ecosystem without disruptions.



## REAL-TIME MONITORING FOR SWIFT INTERVENTION

Stay ahead of potential issues with real-time monitoring that offers instant insights into repeater health, signal strength, utilization, and more. Detect anomalies or equipment malfunctions proactively, enabling swift interventions to ensure uninterrupted service and a seamless, user-friendly experience.

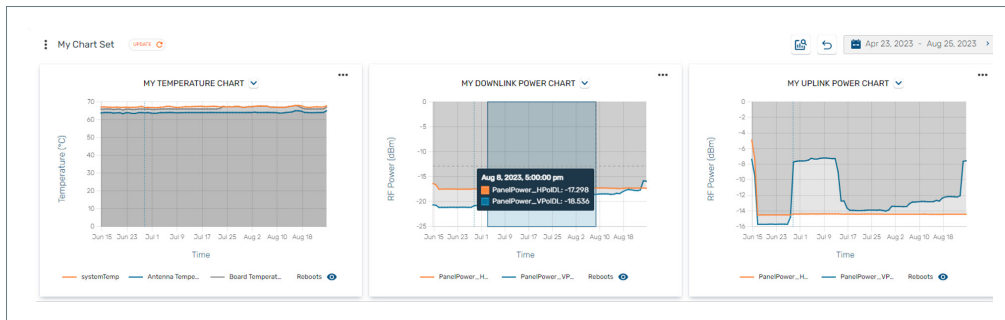


FIG 4

## COMPREHENSIVE SOFTWARE LICENSING APPROACH

Discover our comprehensive software licensing strategy designed to elevate your experience. Choose Basic or Professional levels of software access to cutting-edge features. Elevate your journey with Professional Support, ensuring you're guided every step of the way. For those seeking advanced capabilities, our API access option allows integration with your existing tools, unlocking new possibilities. Experience the power of customization and innovation, ensuring that you're equipped with the ideal licensing solution for your growth and aspirations.

## READY TO ELEVATE YOUR NETWORK MANAGEMENT?

In the realm of mmWave 5G technology, IBMS is your gateway to optimizing and revolutionizing network management. From enhancing performance and connectivity to minimizing downtime and maximizing efficiency, IBMS offers unparalleled solutions that empower you to stay ahead in the dynamic world of connectivity. Are you ready to reshape your network management strategy? Contact us today to embark on a journey of transformation and innovation.

1.855.956.2016 | [sales@pivotalcommware.com](mailto:sales@pivotalcommware.com)

#mmWaveSolved | [www.pivotalcommware.com](http://www.pivotalcommware.com)

